

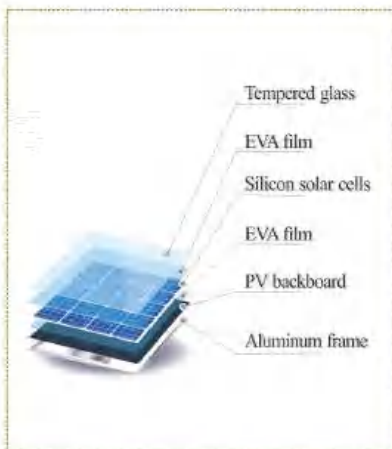
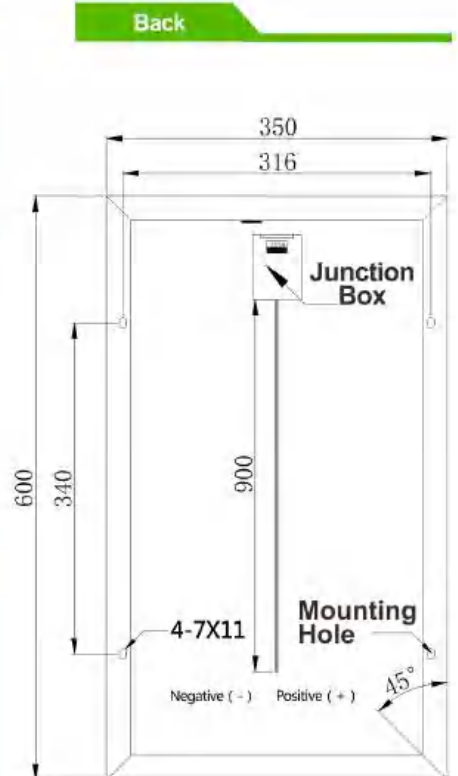
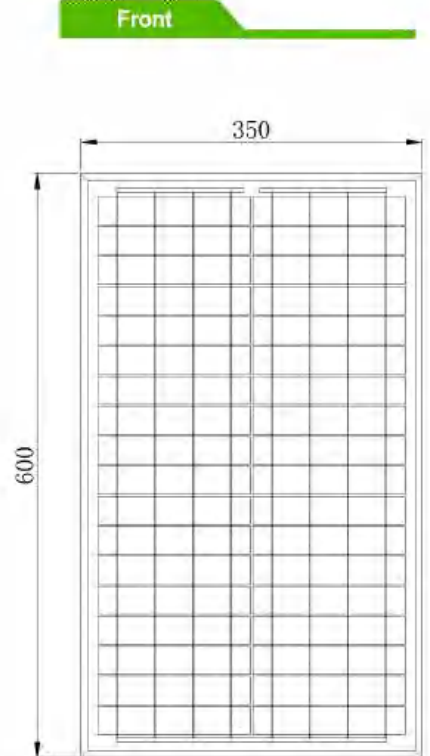


ELECTRIC CHARACTERISTICS

Max. Power (Pmax)	30
Max. Power Voltage (Vmp)	18.0
Max. Power Current (Imp)	1.67
Open Circuit Voltage (Voc)	22.1
Short Circuit Current (Isc)	1.79

SPECIFICATION

Model No. B6MY03018L001	
Cell Type	MONO
Dimension (mm)	600*350*25
Cable Length (mm)	900
Type of Connector	None/MC4
Weight (kg)	2.3



- High energy conversion rate
- Customized design
- Green energy
- 25 years lifetime

